

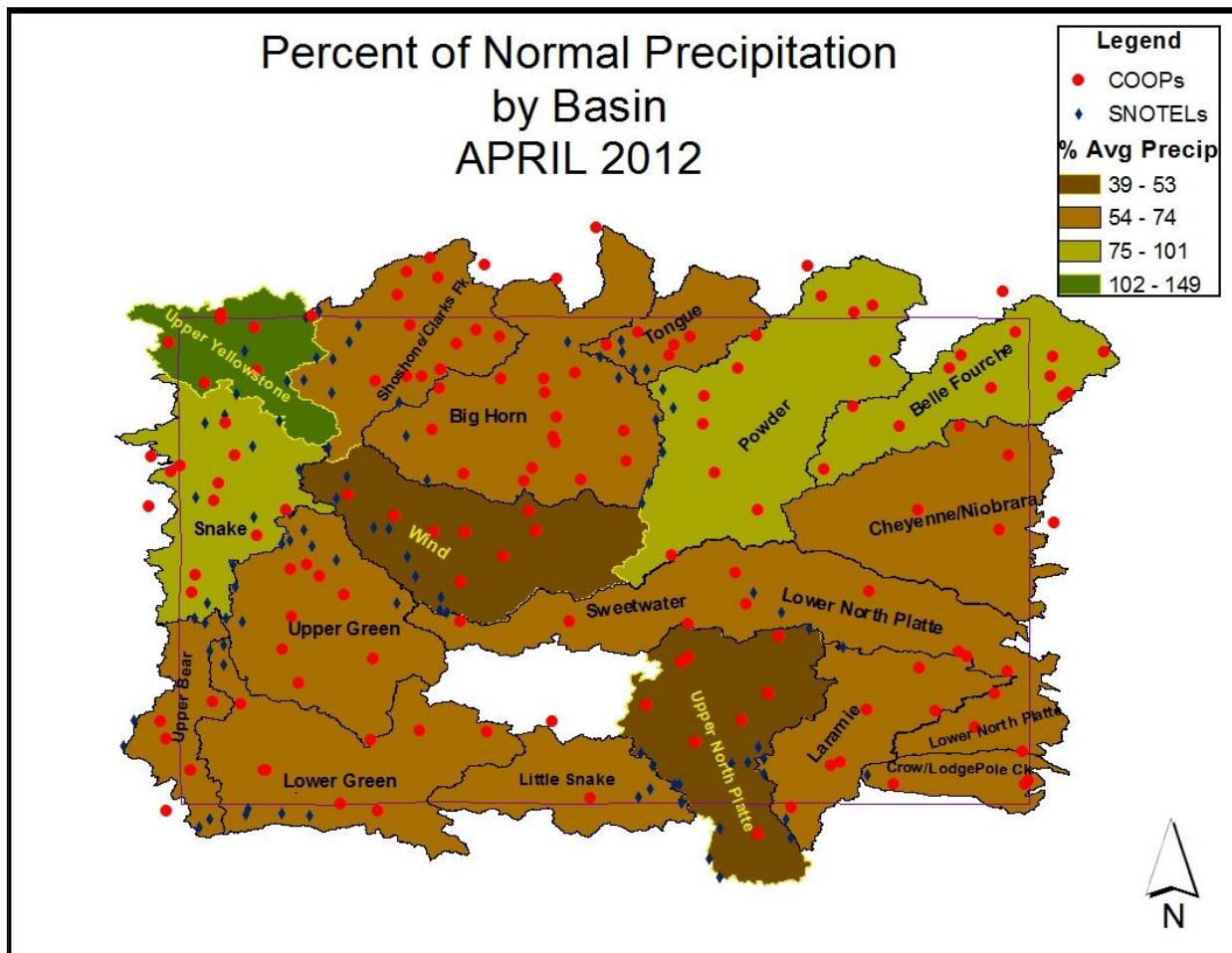
Wyoming Hydrologic Summary

April 2012

Precipitation:

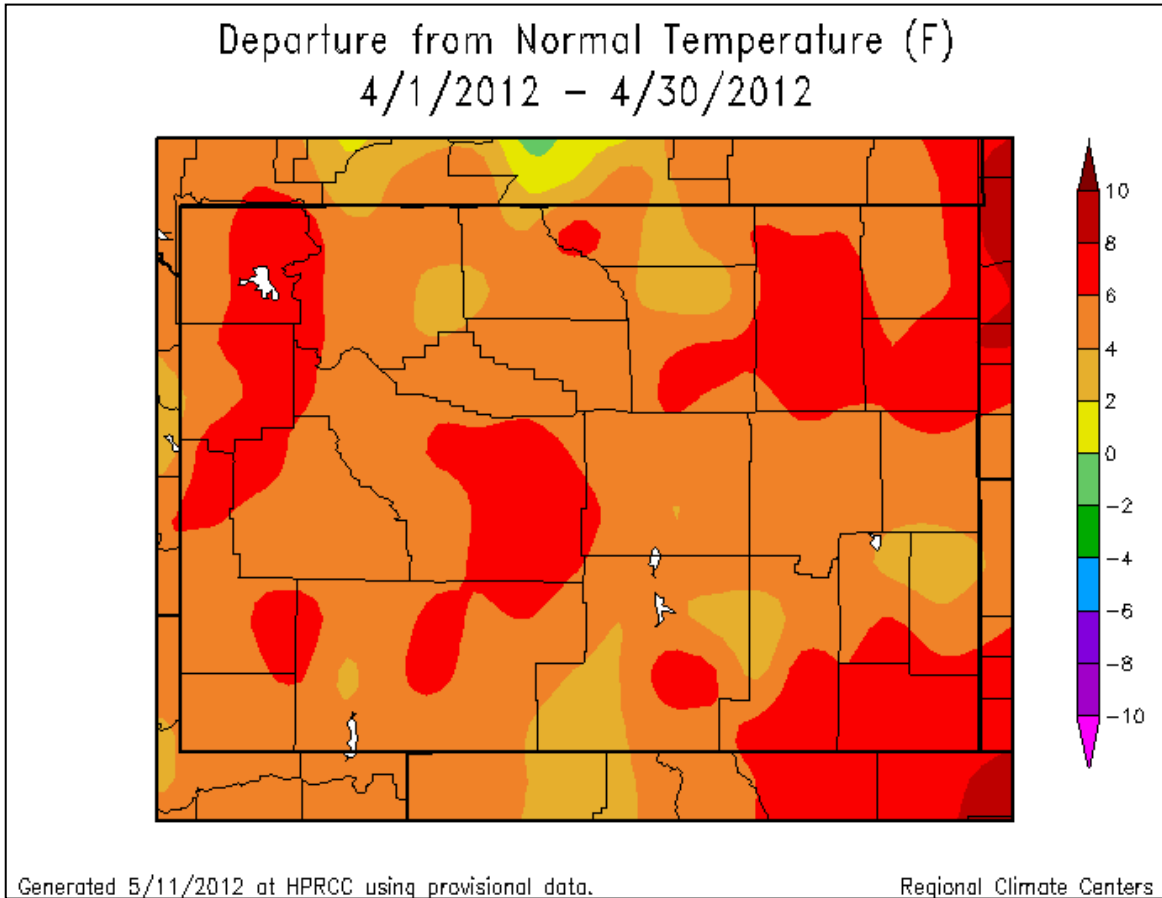
All most all of the major drainage basins in western and central Wyoming had to near **below** to **well below** precipitation during April. The Upper Yellowstone Watershed had **above normal** precipitation totals for the month.

All of the major basins across southeastern Wyoming had **well below** average precipitation during April.



Temperature Trends:

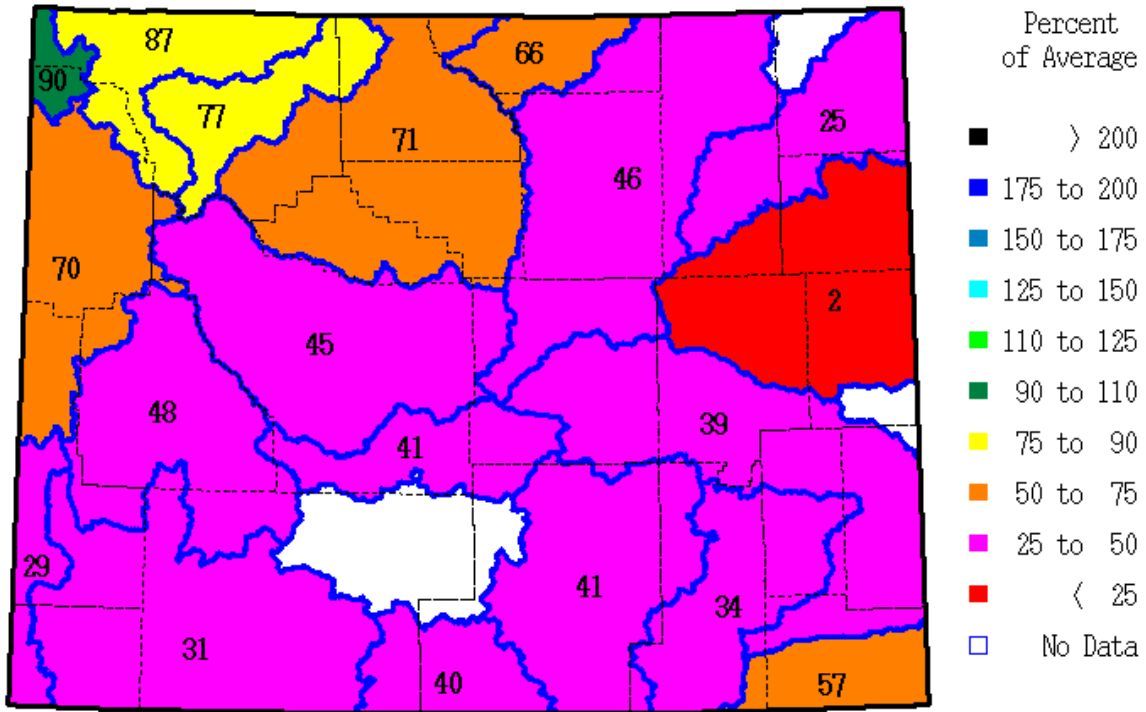
There was above to well above average temperatures in April across all major basins in Wyoming.



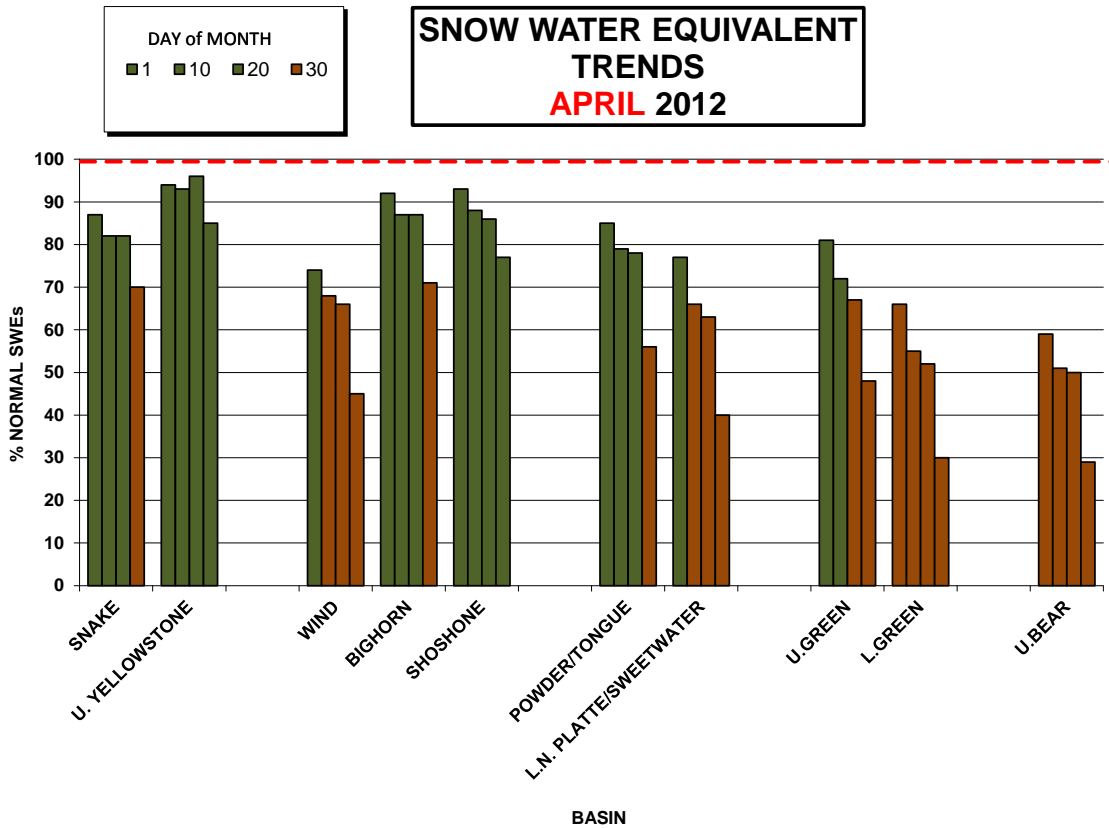
Snowpack/Snow Water Equivalent (SWE) Averages & Trends:

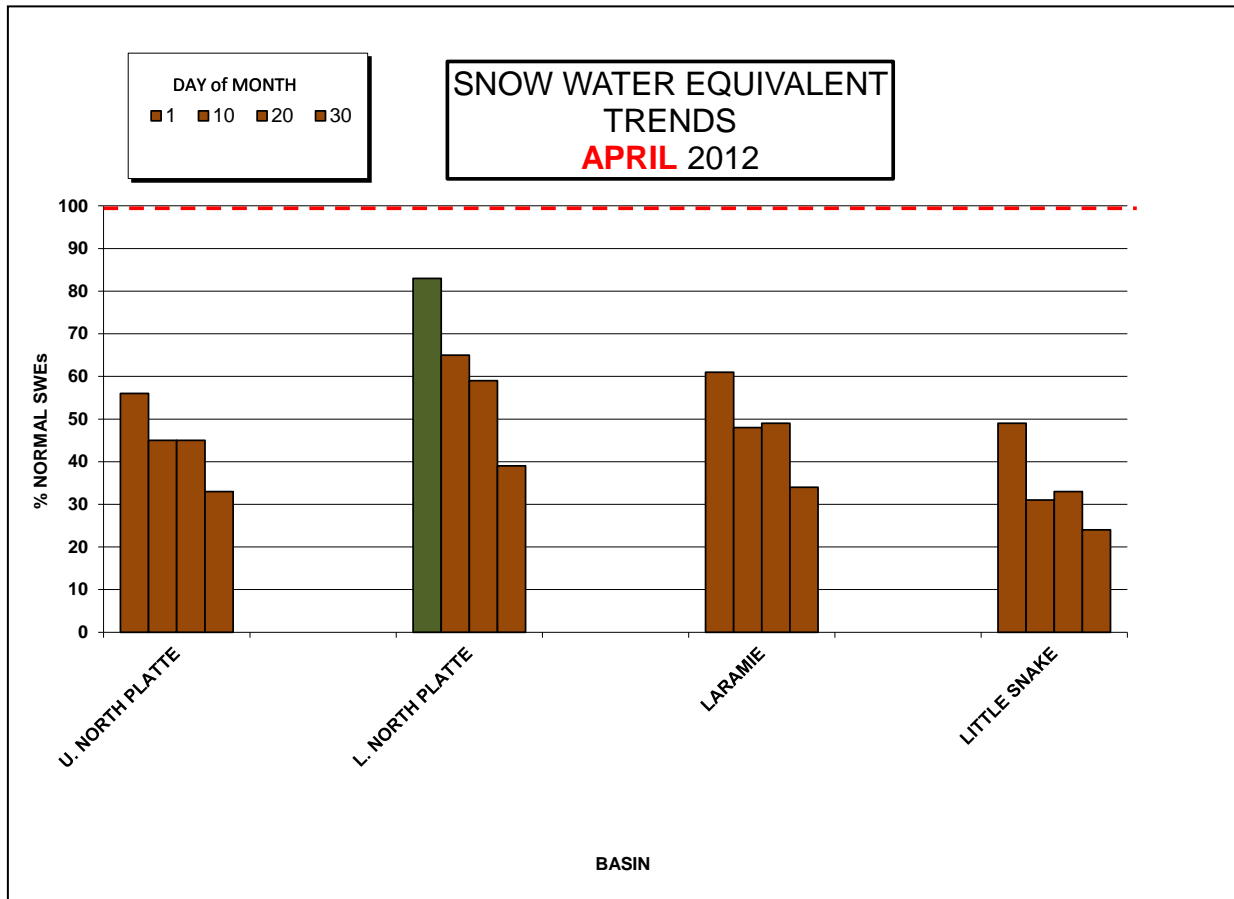
By late April, all of the major basins in Wyoming had **below** to **well below** normal snowpack numbers by the end of the month

SWE % of Average as of Monday, 30 April 2012



* = Data may not provide a valid measure of conditions



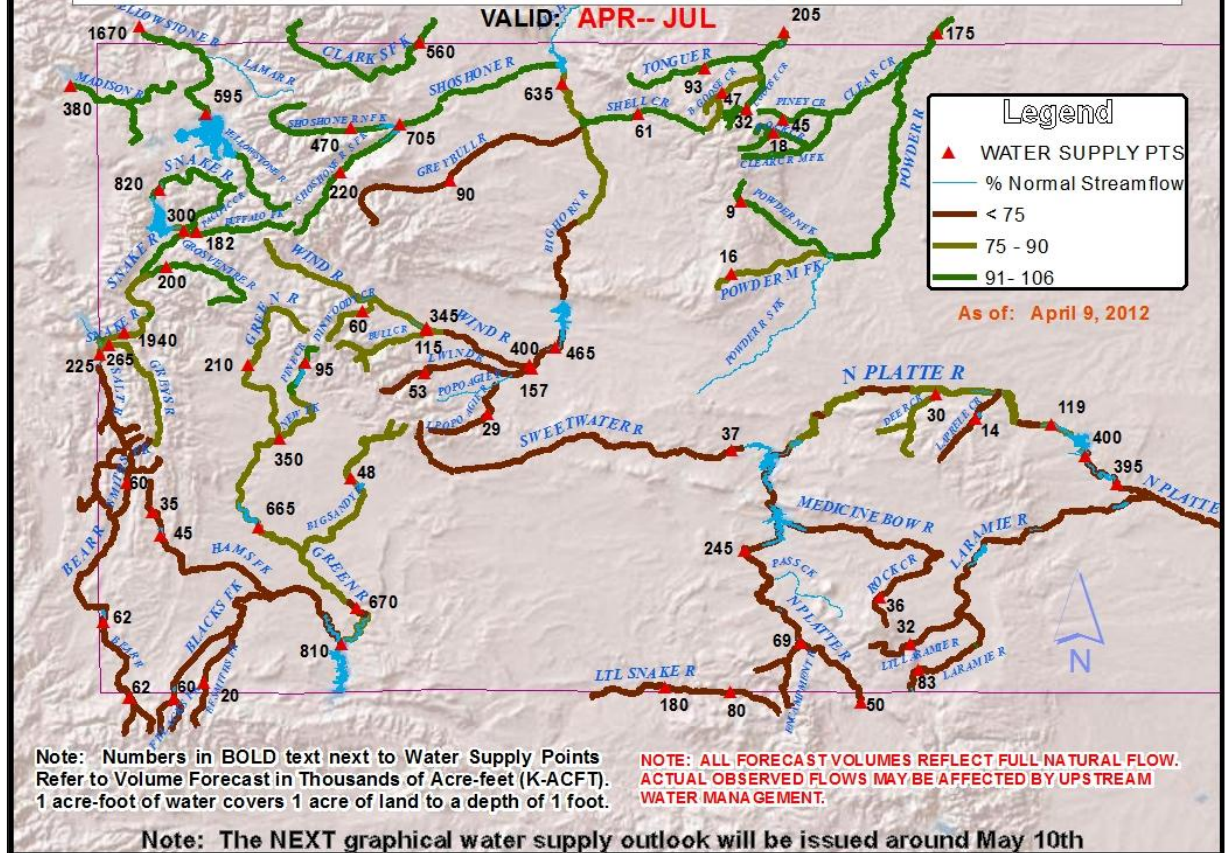


Water Supply/Spring Snowmelt Flood Outlooks:

As of early April, near normal streamflow volumes continue to be expected during the upcoming spring runoff across most of the major basins in northern Wyoming. **Below** average streamflow volumes continue to be expected over central and southern Wyoming watersheds.

As of early April, generally **below normal** streamflow volumes continue to be expected during the upcoming spring runoff across most of the major basins in southeastern Wyoming.

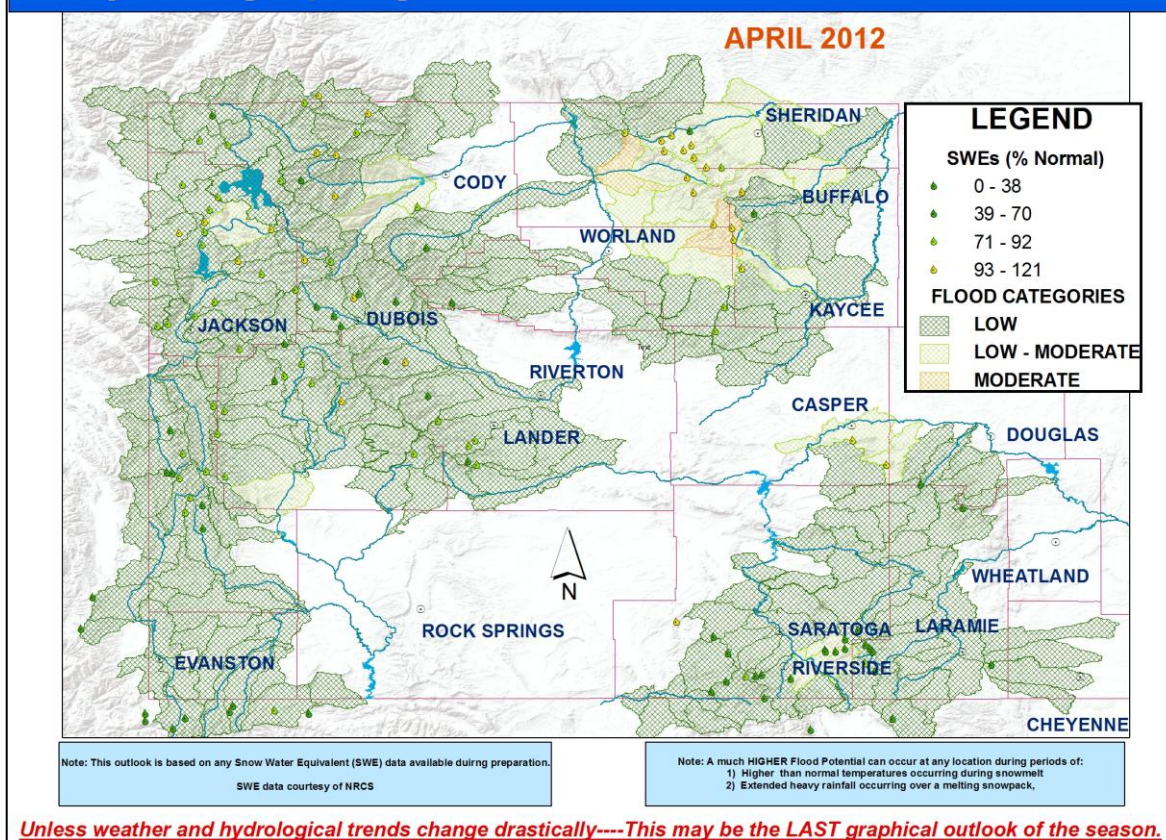
Wyoming Water Supply Outlook



As of the middle of April, there was a moderate potential for spring snowmelt flooding across headwater streams in the Big Horn (eastern half), Watershed. All other basins across central and western Wyoming are expected to see a generally low potential for spring snowmelt flooding.

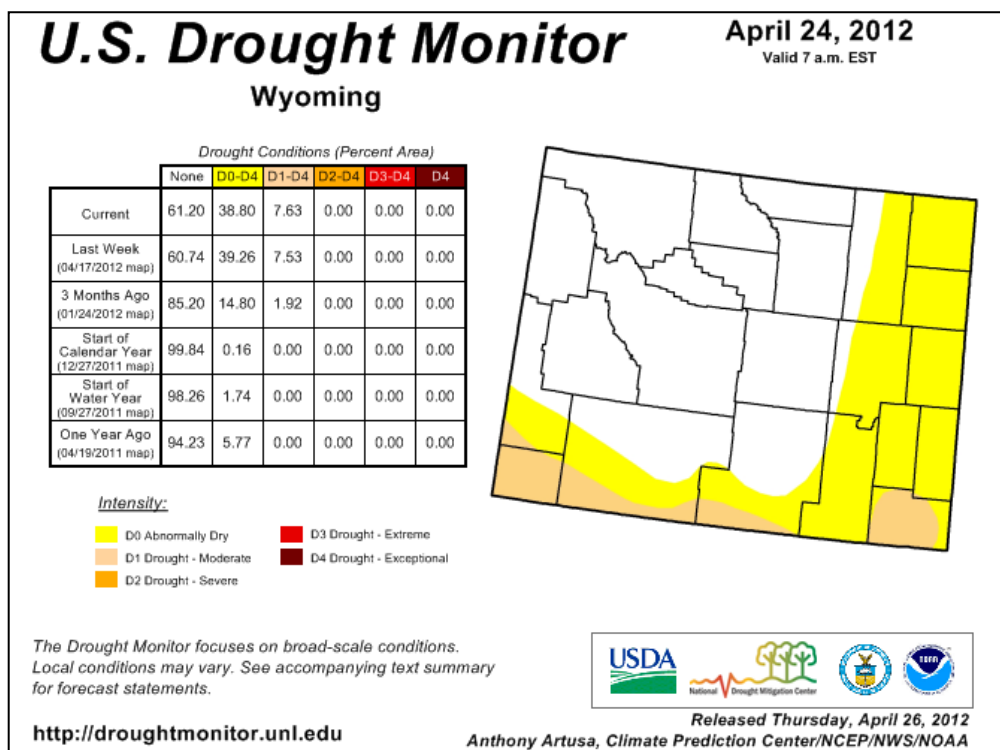
As of the middle of April, all major basins across southeastern Wyoming are expected to see a generally low potential for spring snowmelt flooding

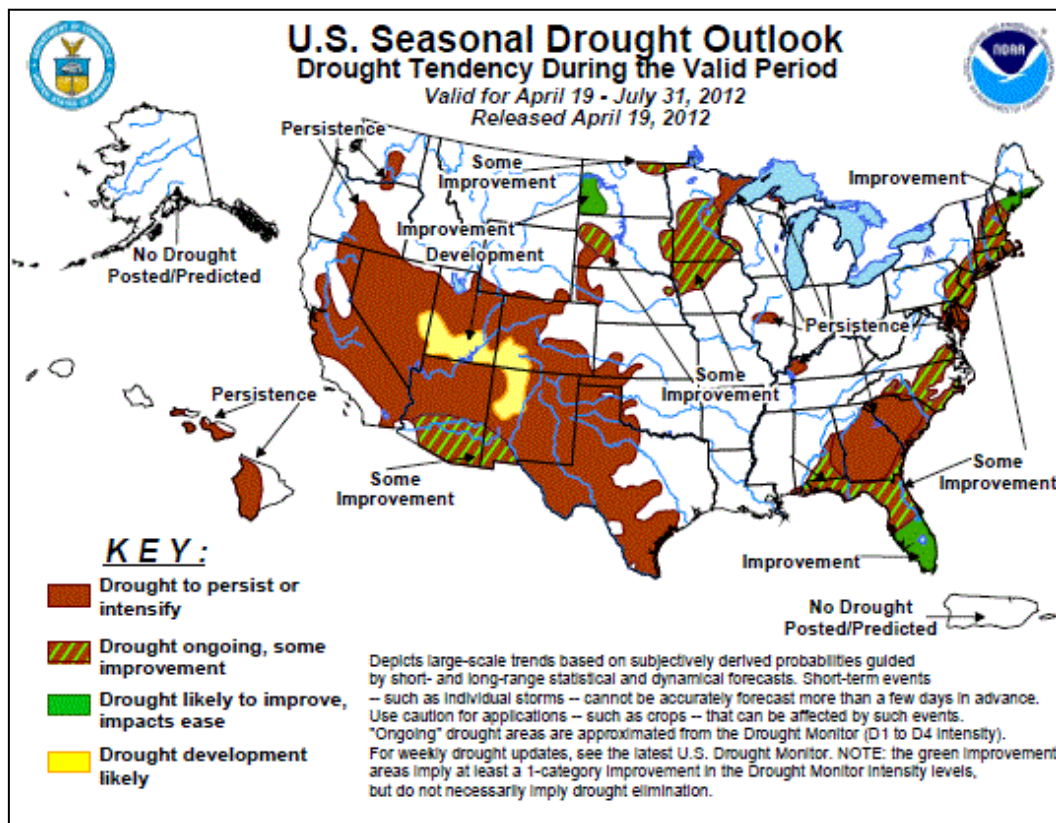
Wyoming Spring Snowmelt Flood Potential Outlook



Drought:

Very dry conditions in March and April over southern Wyoming has resulted in the development of **moderate** hydrologic drought along the Upper Bear, Little Snake, portions of the Lower Green, portions of the Upper North Platte Watersheds. These drought conditions are expected to persist through the summer





Spring Runoff:

Moderate river flows during the last part of April over central and northern Wyoming. No reports of any significant flooding.